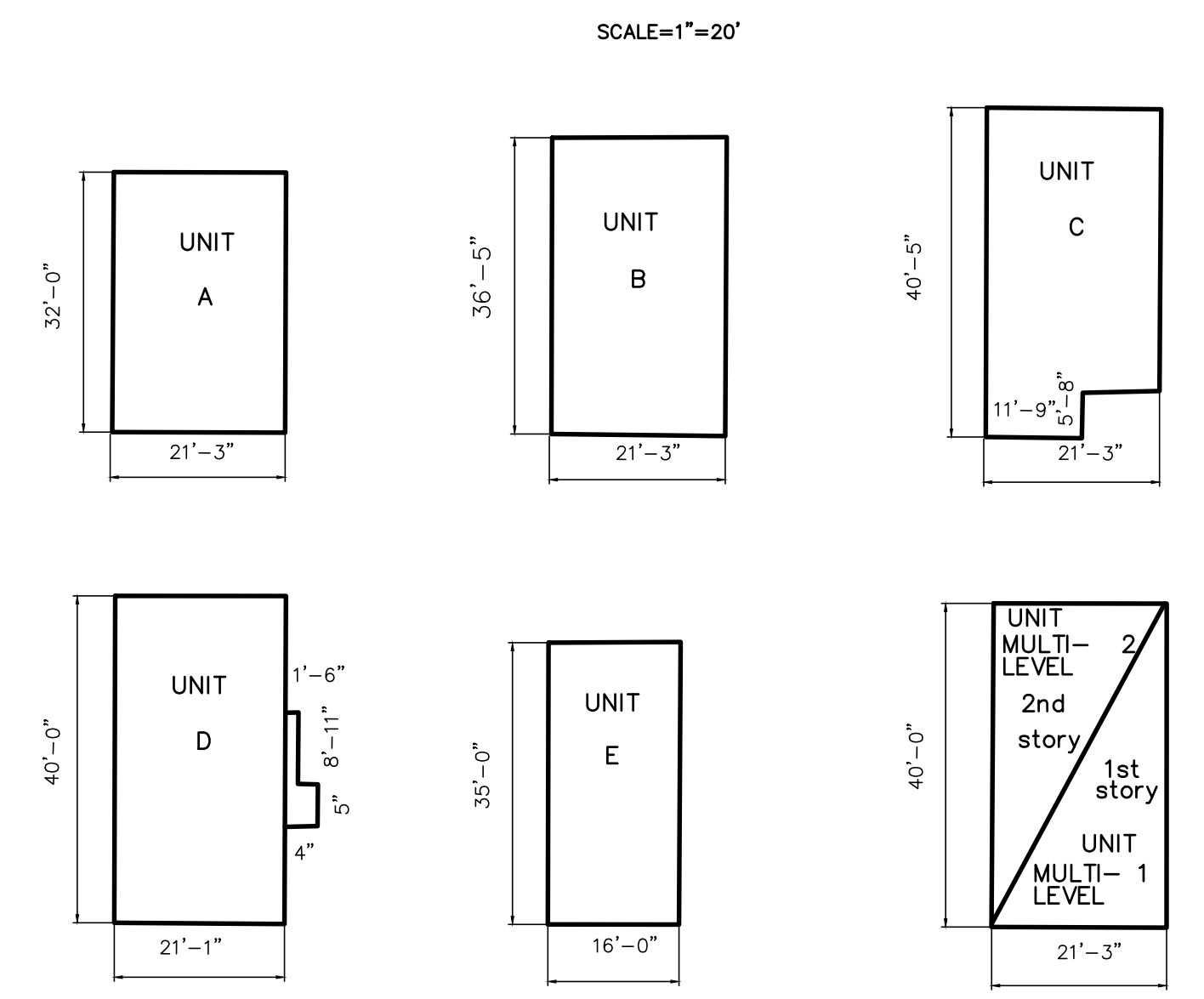


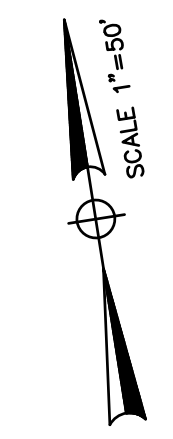
REVISIONS		
DATE	NAME	LIC. NO.

SEE SHEET 38.05

TYPICAL UNIT DIMENSIONS



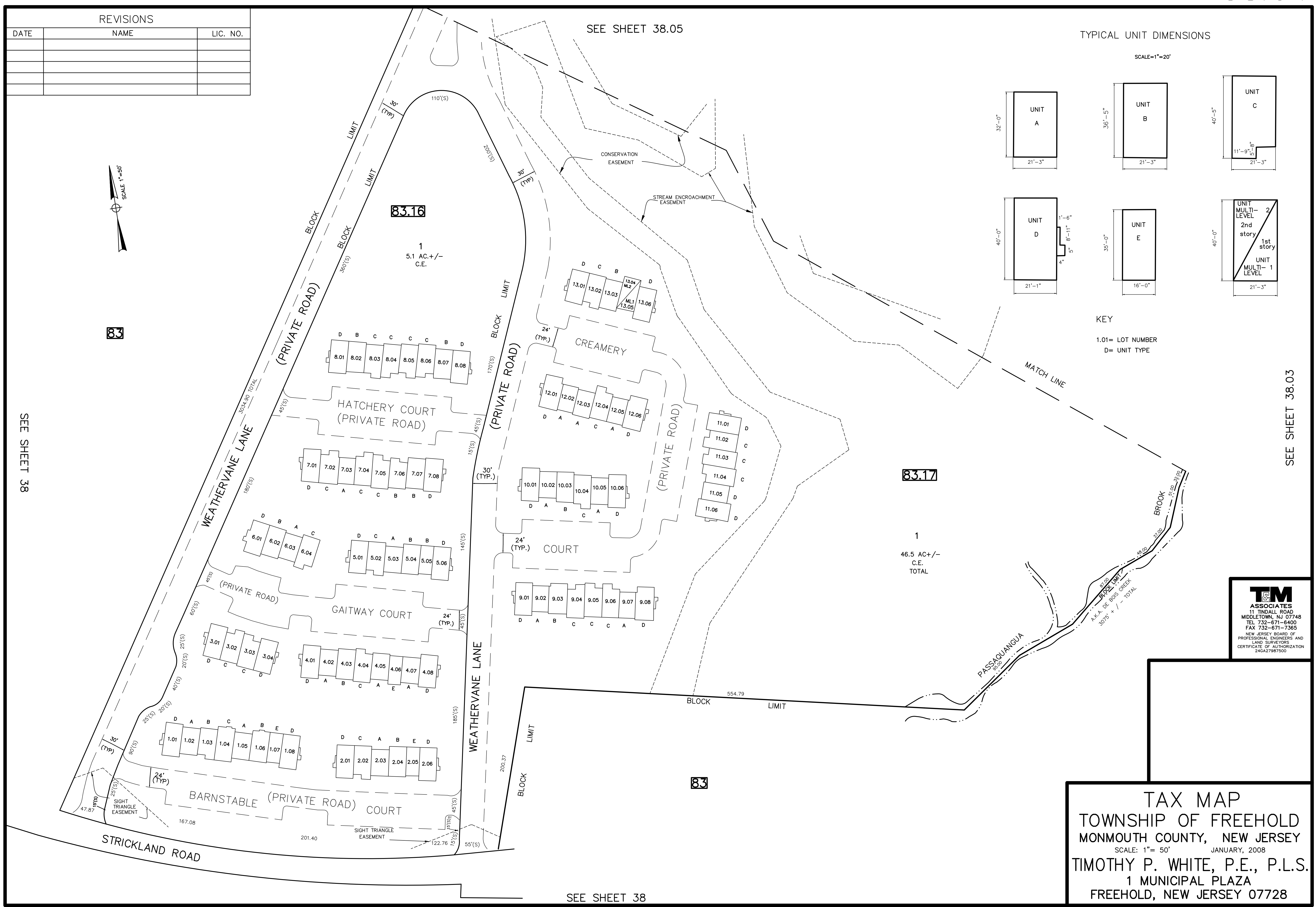
KEY
1.01 = LOT NUMBER
D = UNIT TYPE



83

SEE SHEET 38

SEE SHEET 38.03



83.17

1
46.5 AC +/-
C.E.
TOTAL

TM
ASSOCIATES
11 TINDALL ROAD
MIDDLETOWN, NJ 07748
TEL 732-671-6400
FAX 732-671-7365
NEW JERSEY BOARD OF
PROFESSIONAL ENGINEERS AND
LAND SURVEYORS
CERTIFICATE OF AUTHORIZATION
246A27987500

TAX MAP
TOWNSHIP OF FREEHOLD
MONMOUTH COUNTY, NEW JERSEY
SCALE: 1" = 50' JANUARY, 2008
TIMOTHY P. WHITE, P.E., P.L.S.
1 MUNICIPAL PLAZA
FREEHOLD, NEW JERSEY 07728

SEE SHEET 38

THIS MAP HAS BEEN DRAWN USING COMPUTER AIDED DRAFTING/DESIGN (CAD/D) AND COORDINATE GEOMETRY.

THIS MAP IS A COPY OF THE ORIGINAL MAP PREPARED BY WILLIAM HELD, P.E. & P.L.S. DATED MARCH 1962. THE ORIGINAL MAP IS ON FILE IN THE ENGINEER'S OFFICE.