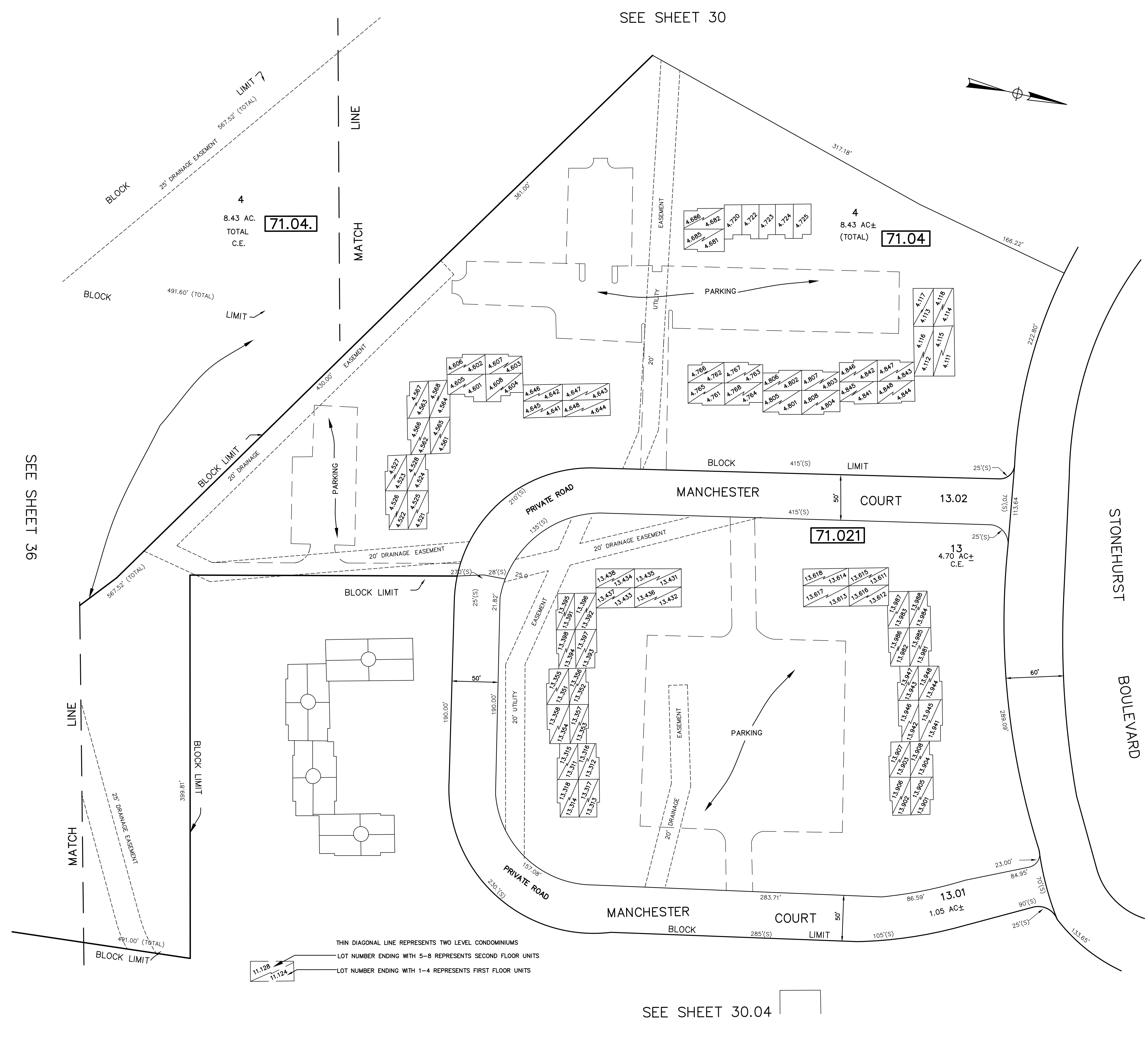


REVISIONS		
DATE	NAME	LIC. NO.



SEE SHEET 36

SEE SHEET 30

SEE SHEET 30.03

SEE SHEET 30.04

THIN DIAGONAL LINE REPRESENTS TWO LEVEL CONDOMINIUMS  
 LOT NUMBER ENDING WITH 5-8 REPRESENTS SECOND FLOOR UNITS  
 LOT NUMBER ENDING WITH 1-4 REPRESENTS FIRST FLOOR UNITS

**TM ASSOCIATES**  
 11 TINDALL ROAD  
 MIDDLETOWN, NJ 07748  
 TEL 732-671-6400  
 FAX 732-671-7365  
 NEW JERSEY BOARD OF PROFESSIONAL ENGINEERS AND LAND SURVEYORS CERTIFICATE OF AUTHORIZATION 246A27987500

**TAX MAP**  
 TOWNSHIP OF FREEHOLD  
 MONMOUTH COUNTY, NEW JERSEY  
 SCALE: 1" = 50' JANUARY, 2008  
**TIMOTHY P. WHITE, P.E., P.L.S.**  
 1 MUNICIPAL PLAZA  
 FREEHOLD, NEW JERSEY 07728

THIS MAP HAS BEEN DRAWN USING COMPUTER AIDED DRAFTING/DESIGN (CAD/D) AND COORDINATE GEOMETRY.

THIS MAP IS A COPY OF THE ORIGINAL MAP PREPARED BY WILLIAM HELD, P.E. & P.L.S. DATED MARCH 1962. THE ORIGINAL MAP IS ON FILE IN THE ENGINEER'S OFFICE.