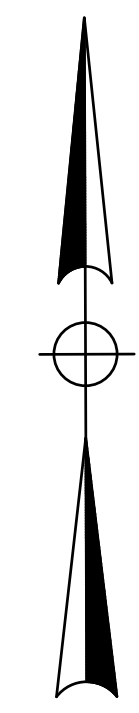
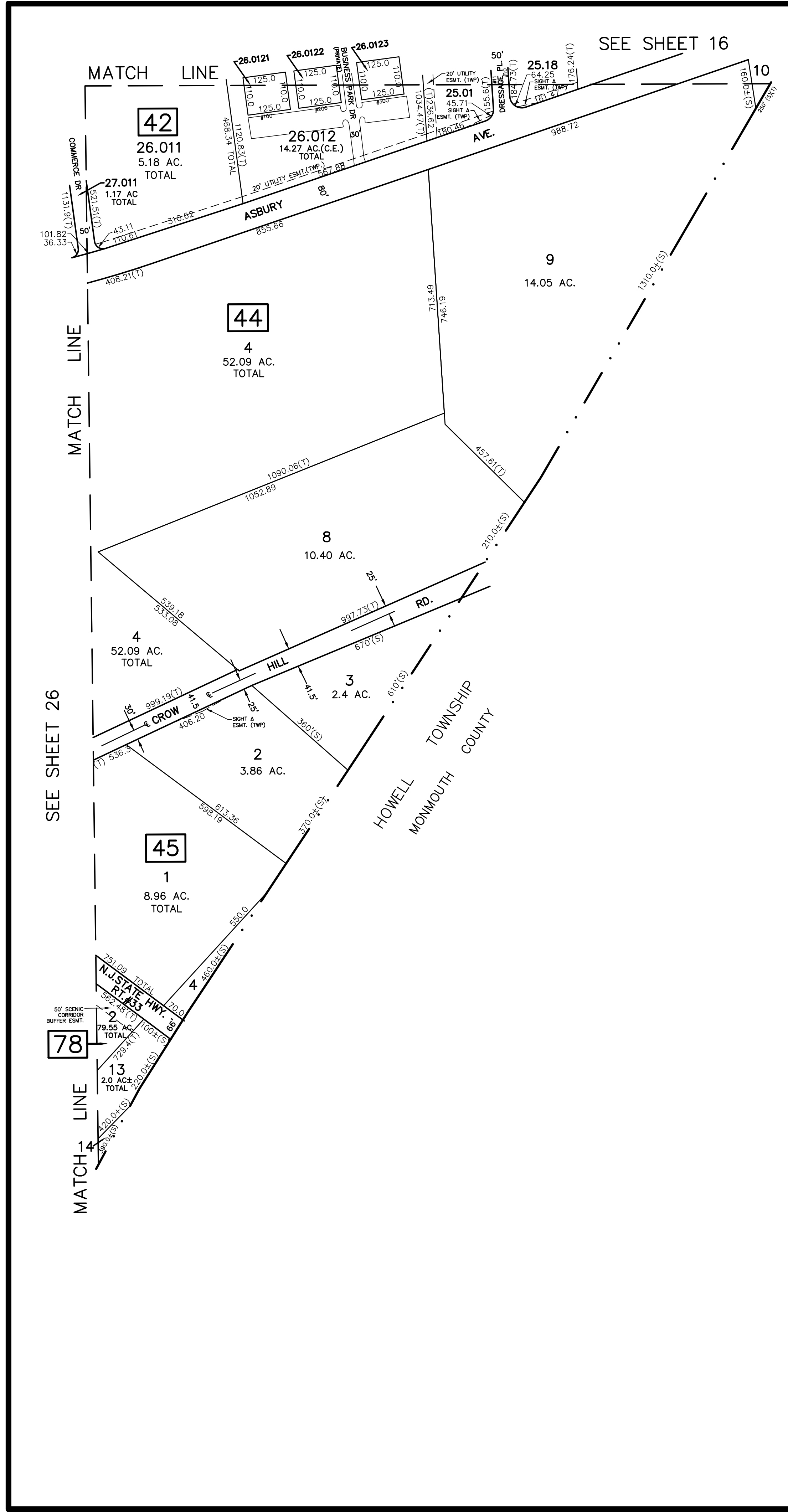


REVISIONS		
DATE	NAME	LIC. NO.
4/23/10	JOSEPH M. MAVURO	24GB02424600
11/21/13	TIMOTHY P. WHITE	24GB02424600
11/23/22	TIMOTHY P. WHITE	24GB02424600



TM
ASSOCIATES
11 TINDALL ROAD
MIDDLETOWN, NJ 07748
TEL 732-671-6400
FAX 732-671-7365
NEW JERSEY BOARD OF
PROFESSIONAL ENGINEERS AND
LAND SURVEYORS
CERTIFICATE OF AUTHORIZATION
24GA27987500

TAX MAP
TOWNSHIP OF FREEHOLD
MONMOUTH COUNTY, NEW JERSEY
SCALE: 1" = 200' JANUARY, 2008
TIMOTHY P. WHITE, P.E., P.L.S.
1 MUNICIPAL PLAZA
FREEHOLD, NEW JERSEY 07728

THIS MAP HAS BEEN DRAWN USING COMPUTER AIDED DRAFTING/DESIGN (CAD/D) AND COORDINATE GEOMETRY.

THIS MAP IS A COPY OF THE ORIGINAL MAP PREPARED BY WILLIAM HELD, P.E. & P.L.S. DATED MARCH 1962. THE ORIGINAL MAP IS ON FILE IN THE ENGINEER'S OFFICE.