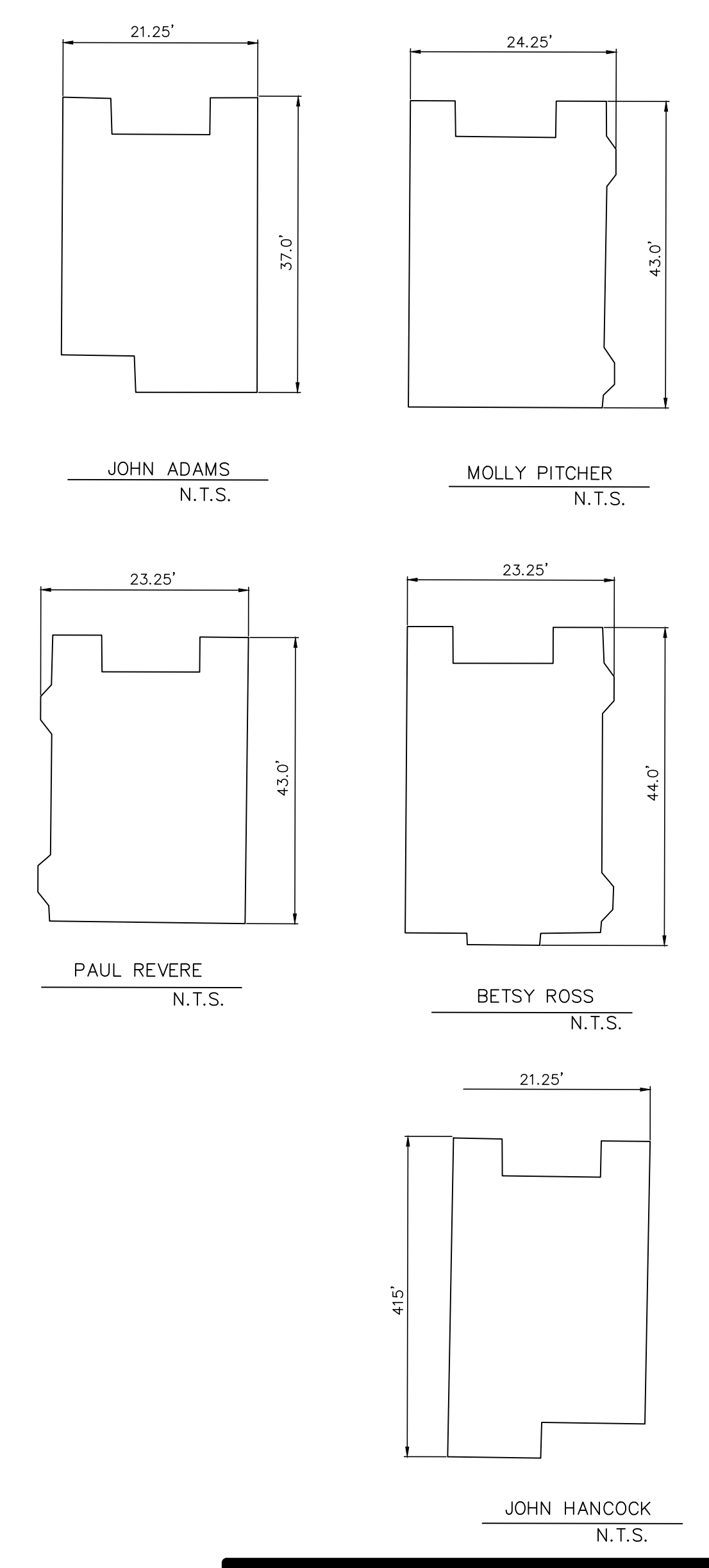
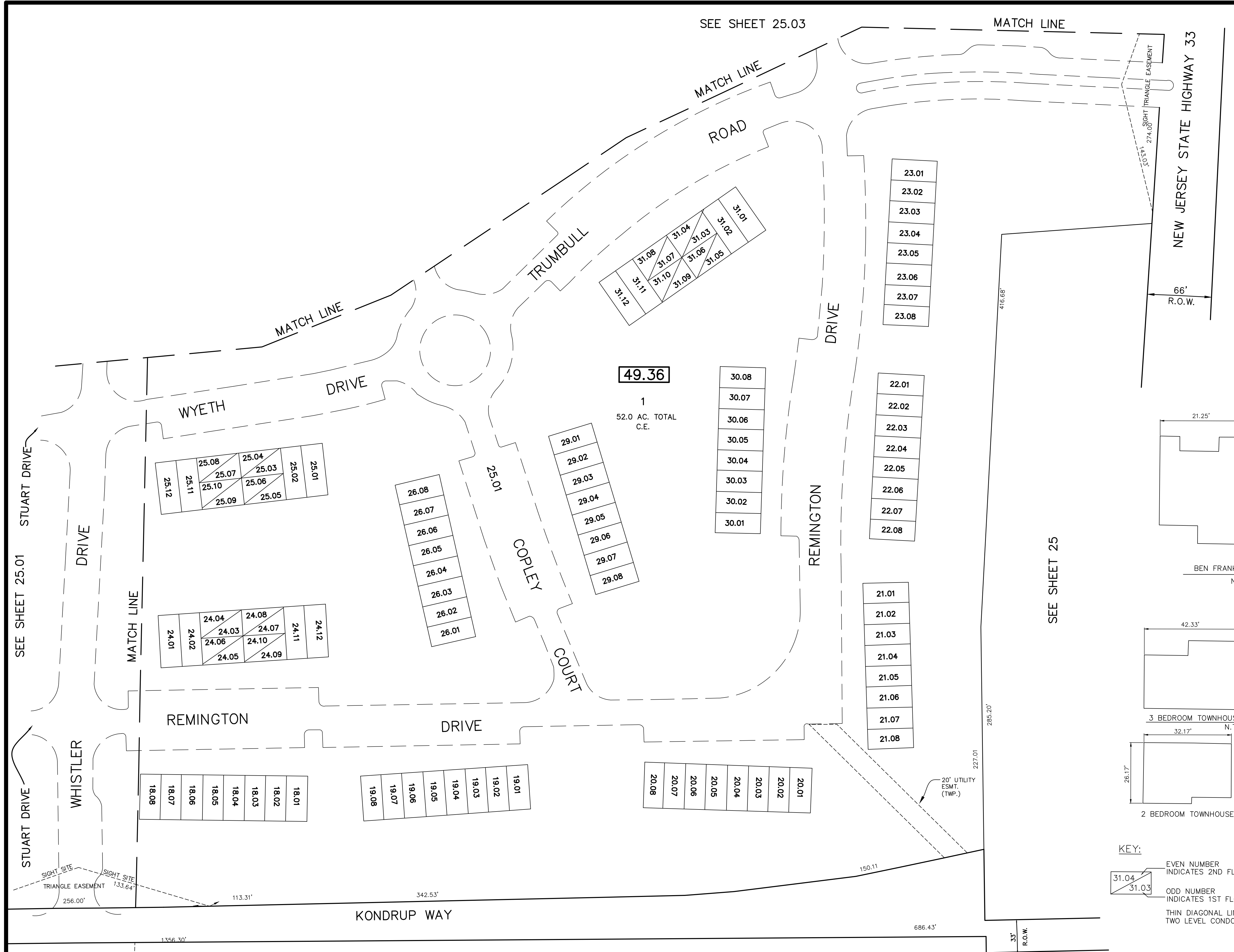
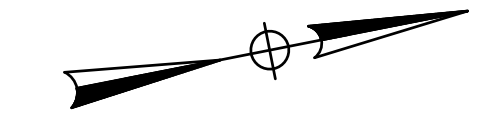


REVISIONS		
DATE	NAME	LIC. NO.
11/1/13	JOSEPH M. MAVURO	24GB02424600



KEY:
 EVEN NUMBER INDICATES 2ND FLOOR UNIT
 ODD NUMBER INDICATES 1ST FLOOR UNIT
 THIN DIAGONAL LINE DENOTES TWO LEVEL CONDOMINIUMS

TM ASSOCIATES
 11 TINDALL ROAD
 MIDDLETOWN, NJ 07748
 TEL 732-671-6400
 FAX 732-671-7365
NEW JERSEY BOARD OF PROFESSIONAL ENGINEERS AND LAND SURVEYORS
 CERTIFICATE OF AUTHORIZATION
 24GA27987500

TAX MAP
 TOWNSHIP OF FREEHOLD
 MONMOUTH COUNTY, NEW JERSEY
 SCALE: 1" = 50' JANUARY, 2008
TIMOTHY P. WHITE, P.E., P.L.S.
 1 MUNICIPAL PLAZA
 FREEHOLD, NEW JERSEY 07728