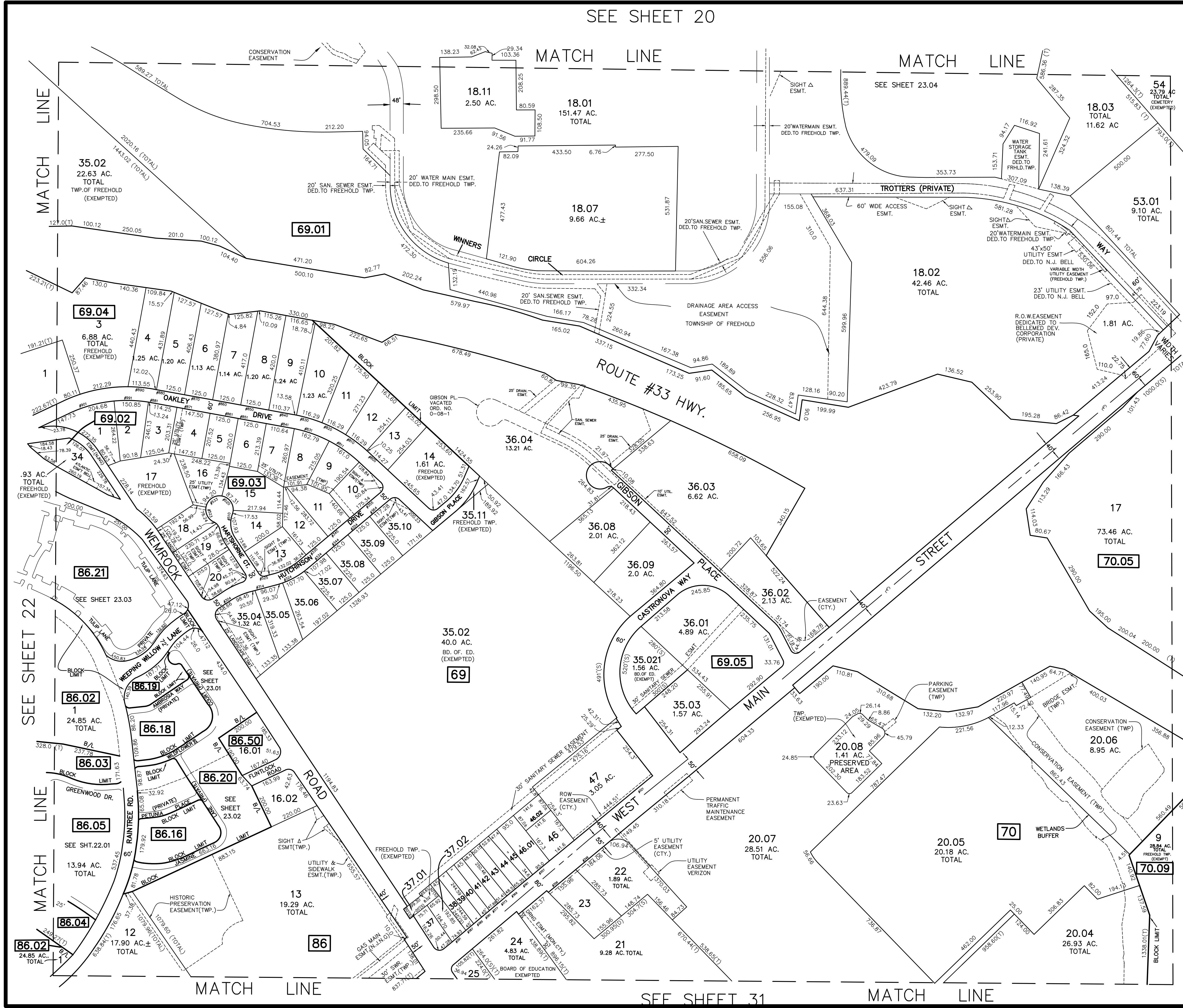


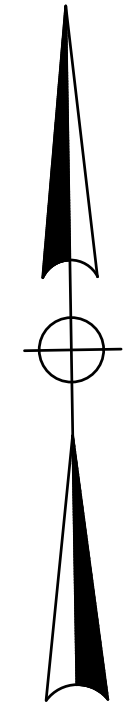
SEE SHEET 20

REVISIONS		
DATE	NAME	LIC. NO.
3/16/10	JOSEPH M. MAVURO	24GB02424600
6/8/10	JOSEPH M. MAVURO	24GB02424600
9/28/10	JOSEPH M. MAVURO	24GB02424600
10/19/12	JOSEPH M. MAVURO	24GB02424600
10/19/12	JOSEPH M. MAVURO	24GB02424600
11/4/16	TIMOTHY P. WHITE	24GB04257000
8/27/19	TIMOTHY P. WHITE	24GB04257000
6/11/20	TIMOTHY P. WHITE	24GB04257000
6/22/22	TIMOTHY P. WHITE	24GB04257000



MATCH LINE

SEE SHEET 24



TM ASSOCIATES
 11 TINDALL ROAD
 MIDDLETOWN, NJ 07748
 TEL 732-671-6400
 FAX 732-671-7365
 NEW JERSEY BOARD OF PROFESSIONAL ENGINEERS AND LAND SURVEYORS
 CERTIFICATE OF AUTHORIZATION 24GA27987500

TAX MAP
 TOWNSHIP OF FREEHOLD
 MONMOUTH COUNTY, NEW JERSEY
 SCALE: 1" = 200' JANUARY, 2008
TIMOTHY P. WHITE, P.E., P.L.S.
 1 MUNICIPAL PLAZA
 FREEHOLD, NEW JERSEY 07728

THIS MAP HAS BEEN DRAWN USING COMPUTER AIDED DRAFTING/DESIGN (CAD/D) AND COORDINATE GEOMETRY.

THIS MAP IS A COPY OF THE ORIGINAL MAP PREPARED BY WILLIAM HELD, P.E. & P.L.S. DATED MARCH 1962. THE ORIGINAL MAP IS ON FILE IN THE ENGINEER'S OFFICE.