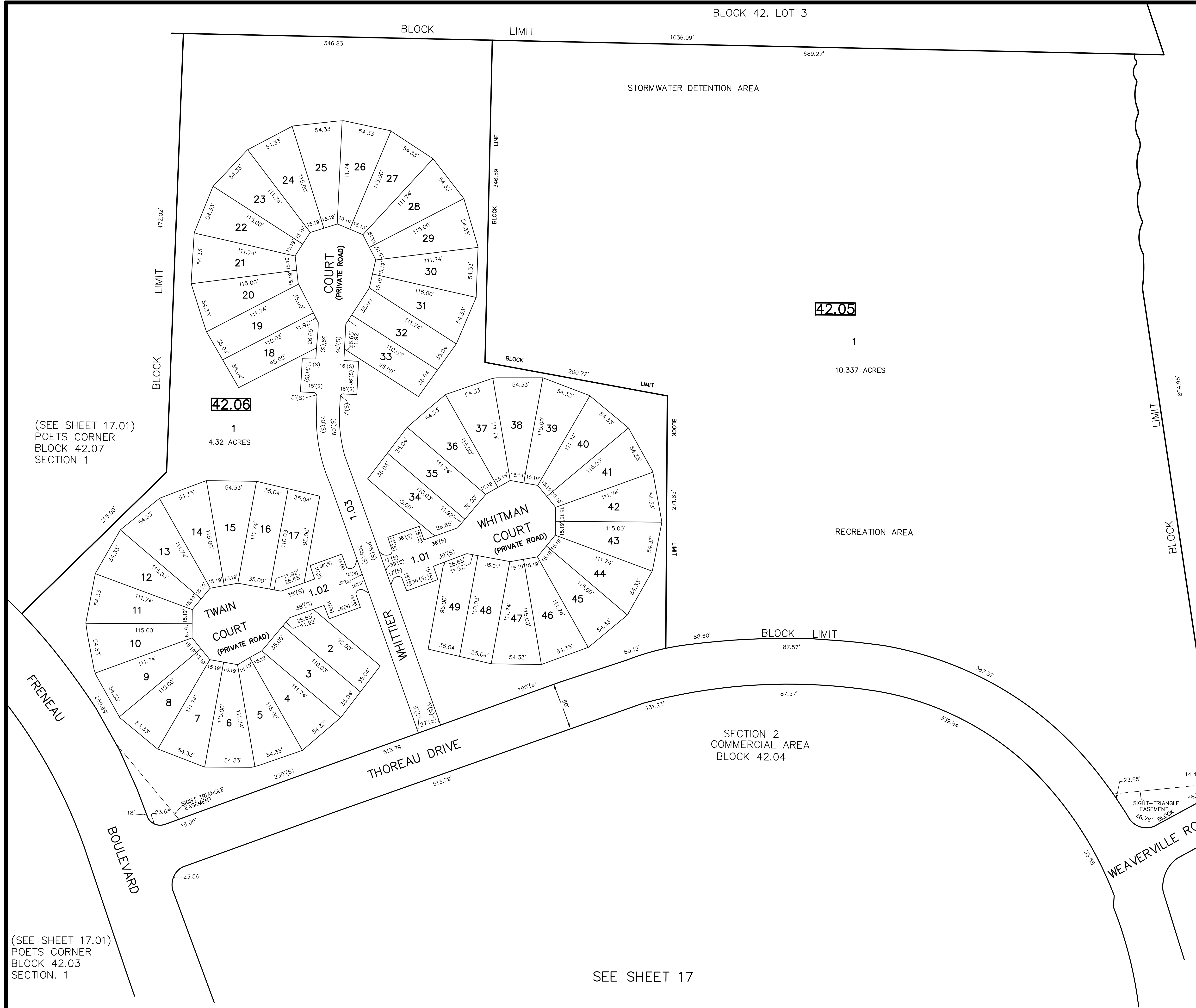


REVISIONS		
DATE	NAME	LIC. NO.



LOT 47

BLOCK 42
LOT 67

LOT 66

SEE SHEET 17

TAX MAP
TOWNSHIP OF FREEHOLD
MONMOUTH COUNTY, NEW JERSEY
 SCALE: 1" = 200' JANUARY, 2008
TIMOTHY P. WHITE, P.E., P.L.S.
 1 MUNICIPAL PLAZA
 FREEHOLD, NEW JERSEY 07728

TM ASSOCIATES
 11 TINDALL ROAD
 MIDDLETOWN, NJ 07748
 TEL 732-671-6400
 FAX 732-671-7365
 NEW JERSEY BOARD OF
 PROFESSIONAL ENGINEERS AND
 LAND SURVEYORS
 CERTIFICATE OF AUTHORIZATION
 246A27987500

(SEE SHEET 17.01)
 POETS CORNER
 BLOCK 42.07
 SECTION 1

(SEE SHEET 17.01)
 POETS CORNER
 BLOCK 42.03
 SECTION. 1

SEE SHEET 17

THIS MAP HAS BEEN DRAWN USING COMPUTER AIDED
 DRAFTING/DESIGN (CAD/D) AND COORDINATE GEOMETRY.

THIS MAP IS A COPY OF THE ORIGINAL MAP
 PREPARED BY WILLIAM HELD, P.E. & P.L.S.
 DATED MARCH 1962. THE ORIGINAL MAP IS ON
 FILE IN THE ENGINEER'S OFFICE.