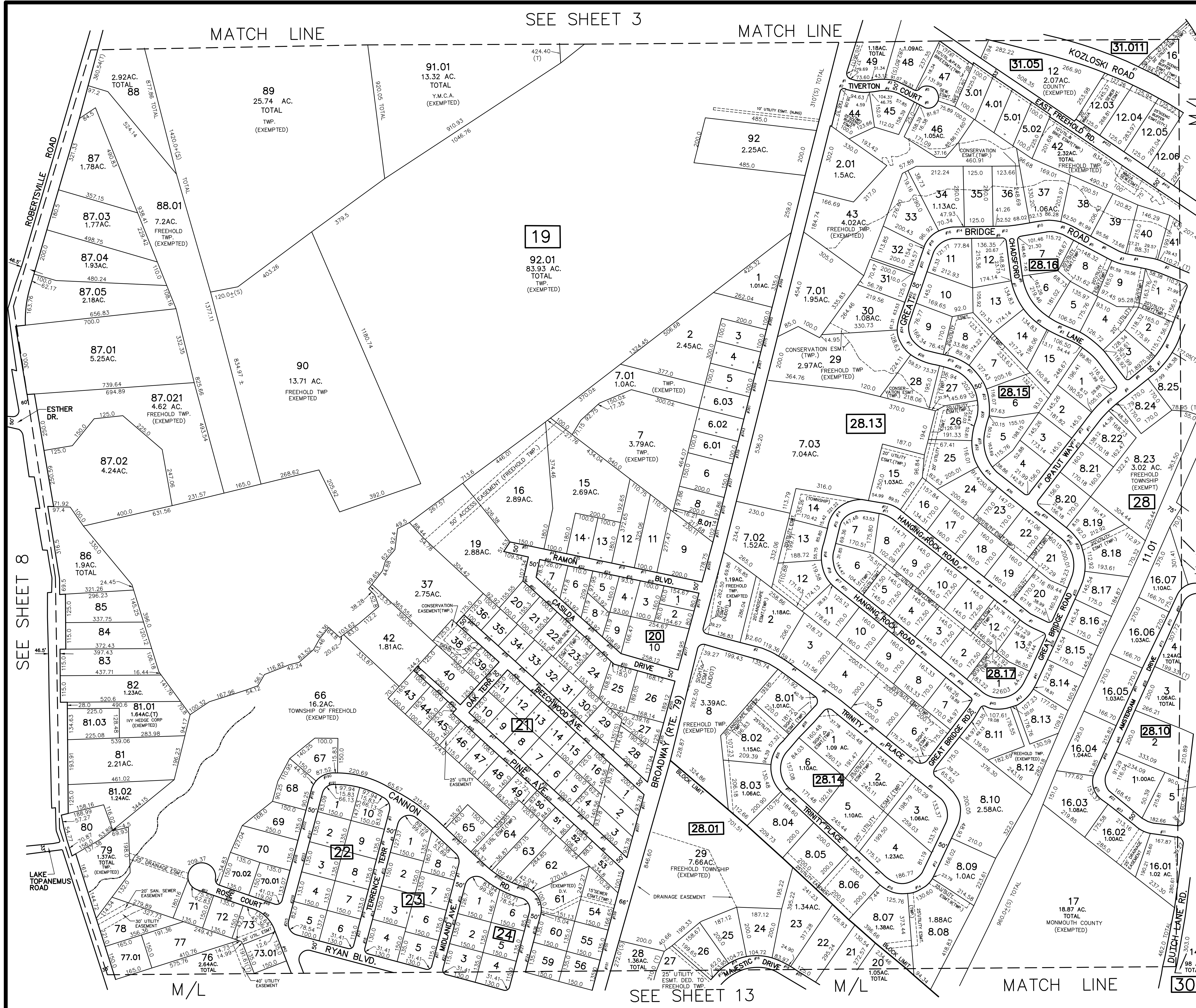


SEE SHEET 3

MATCH LINE

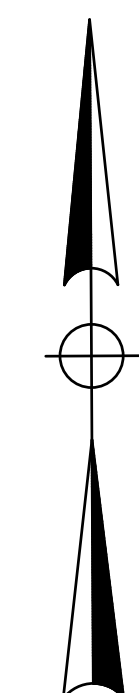
REVISIONS

DATE	NAME	LIC. NO.
4/19/10	JOSEPH M. MAVURO	24GB02424600
2/5/13	JOSEPH M. MAVURO	24GB02424600
9/21/22	TIMOTHY P. WHITE	24GB04257000
2/10/23	TIMOTHY P. WHITE	24GB04257000



SEE SHEET 6

MATCH LINE



**TM**  
 ASSOCIATES  
 11 TINDALL ROAD  
 MIDDLETOWN, NJ 07748  
 TEL 732-671-6400  
 FAX 732-671-7365  
 NEW JERSEY BOARD OF  
 PROFESSIONAL ENGINEERS AND  
 LAND SURVEYORS  
 CERTIFICATE OF AUTHORIZATION  
 24GA27987500

**TAX MAP**  
 TOWNSHIP OF FREEHOLD  
 MONMOUTH COUNTY, NEW JERSEY  
 SCALE: 1" = 200' JANUARY, 2008  
**TIMOTHY P. WHITE, P.E., P.L.S.**  
 1 MUNICIPAL PLAZA  
 FREEHOLD, NEW JERSEY 07728

THIS MAP HAS BEEN DRAWN USING COMPUTER AIDED  
 DRAFTING/DESIGN (CAD/D) AND COORDINATE GEOMETRY.

THIS MAP IS A COPY OF THE ORIGINAL MAP  
 PREPARED BY WILLIAM HELD, P.E. & P.L.S.  
 DATED MARCH 1962. THE ORIGINAL MAP IS ON  
 FILE IN THE ENGINEER'S OFFICE.