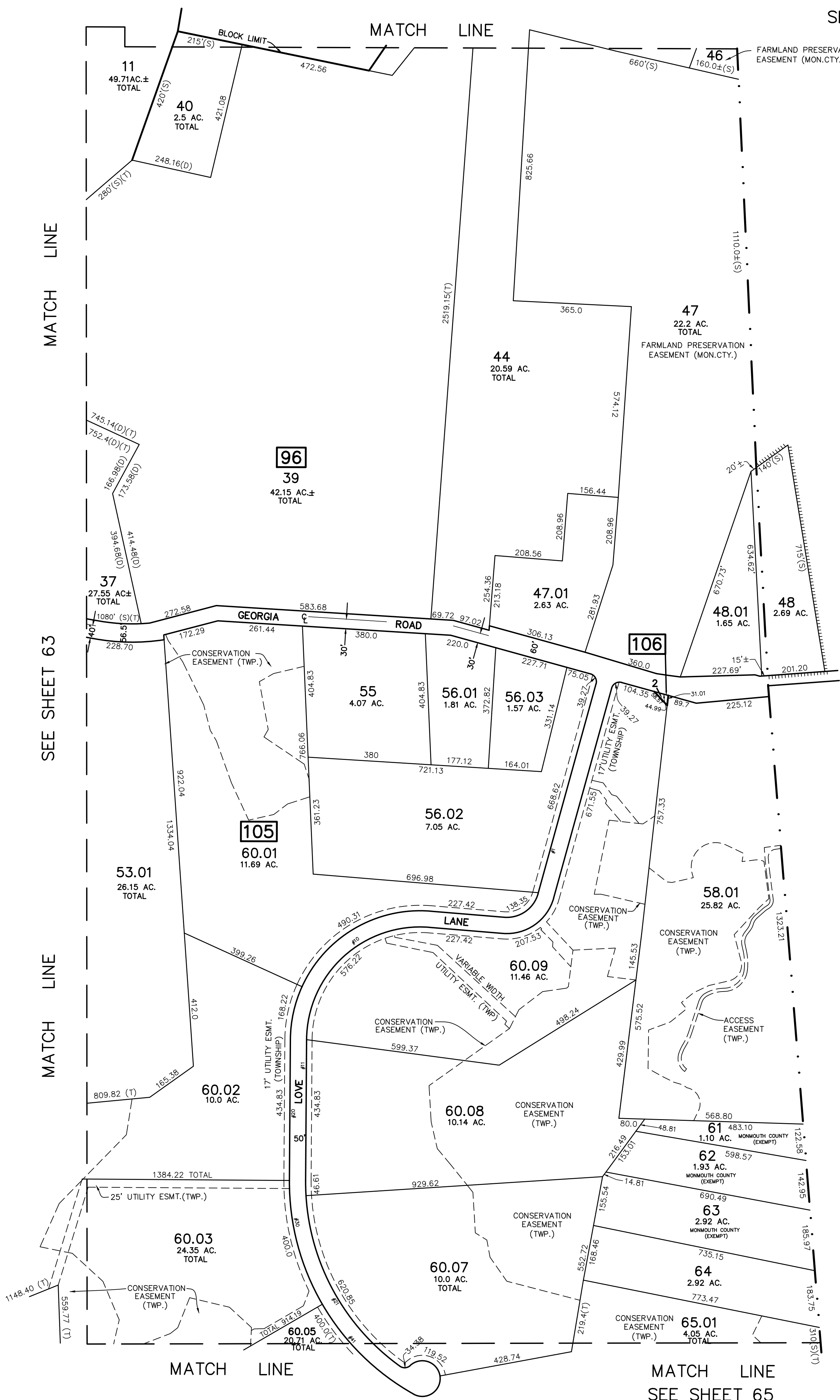
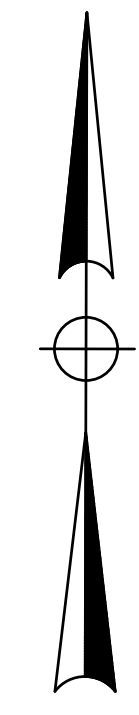


SEE SHEET 50

REVISIONS		
DATE	NAME	LIC. NO.
11/4/16	TIMOTHY P. WHITE	24GB04257000
6/22/21	TIMOTHY P. WHITE	24GB04257000



HOWELL TOWNSHIP  
MONMOUTH COUNTY



**TM ASSOCIATES**  
11 TINDALL ROAD  
MIDDLETOWN, NJ 07748  
TEL 732-671-6400  
FAX 732-671-7365  
NEW JERSEY BOARD OF PROFESSIONAL ENGINEERS AND LAND SURVEYORS  
CERTIFICATE OF AUTHORIZATION 24GA27987500

**TAX MAP**  
TOWNSHIP OF FREEHOLD  
MONMOUTH COUNTY, NEW JERSEY  
SCALE: 1" = 200' JANUARY, 2008  
**TIMOTHY P. WHITE, P.E., P.L.S.**  
1 MUNICIPAL PLAZA  
FREEHOLD, NEW JERSEY 07728

THIS MAP HAS BEEN DRAWN USING COMPUTER AIDED DRAFTING/DESIGN (CAD/D) AND COORDINATE GEOMETRY.

THIS MAP IS A COPY OF THE ORIGINAL MAP PREPARED BY WILLIAM HELD, P.E. & P.L.S. DATED MARCH 1962. THE ORIGINAL MAP IS ON FILE IN THE ENGINEER'S OFFICE.