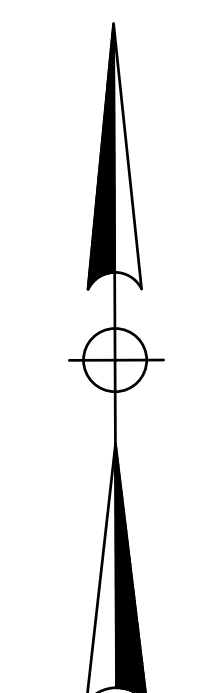
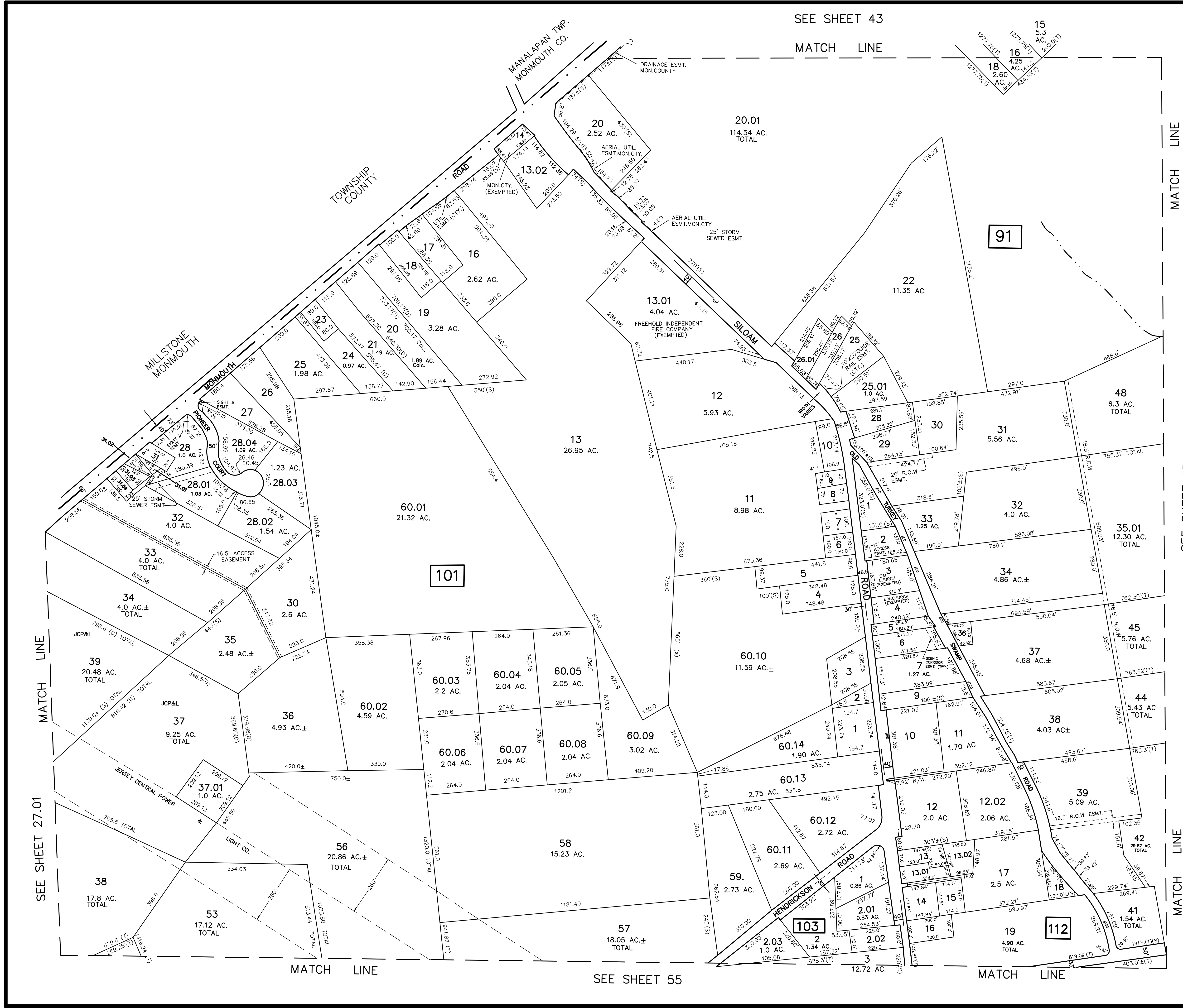


REVISIONS		
DATE	NAME	LIC. NO.
7/7/10	JOSEPH M. MAVURO	24GB02424600
8/9/12	JOSEPH M. MAVURO	24GB02424600
10/3/12	JOSEPH M. MAVURO	24GB02424600
11/15/12	JOSEPH M. MAVURO	24GB02424600
1/15/13	JOSEPH M. MAVURO	24GB02424600
8/21/13	JOSEPH M. MAVURO	24GB02424600
12/31/16	TIMOTHY P. WHITE	24GB04257000
8/25/17	TIMOTHY P. WHITE	24GB04257000
10/28/21	TIMOTHY P. WHITE	24GB04257000



TM
ASSOCIATES
 11 TINDALL ROAD
 MIDDLETOWN, NJ 07748
 TEL 732-671-6400
 FAX 732-671-7365
 NEW JERSEY BOARD OF
 PROFESSIONAL ENGINEERS AND
 LAND SURVEYORS
 CERTIFICATE OF AUTHORIZATION
 24GA27987500

TAX MAP
TOWNSHIP OF FREEHOLD
MONMOUTH COUNTY, NEW JERSEY
 SCALE: 1" = 200' JANUARY, 2008
TIMOTHY P. WHITE, P.E., P.L.S.
 1 MUNICIPAL PLAZA
 FREEHOLD, NEW JERSEY 07728

THIS MAP HAS BEEN DRAWN USING COMPUTER AIDED DRAFTING/DESIGN (CAD/D) AND COORDINATE GEOMETRY.

THIS MAP IS A COPY OF THE ORIGINAL MAP PREPARED BY WILLIAM HELD, P.E. & P.L.S. DATED MARCH 1962. THE ORIGINAL MAP IS ON FILE IN THE ENGINEER'S OFFICE.