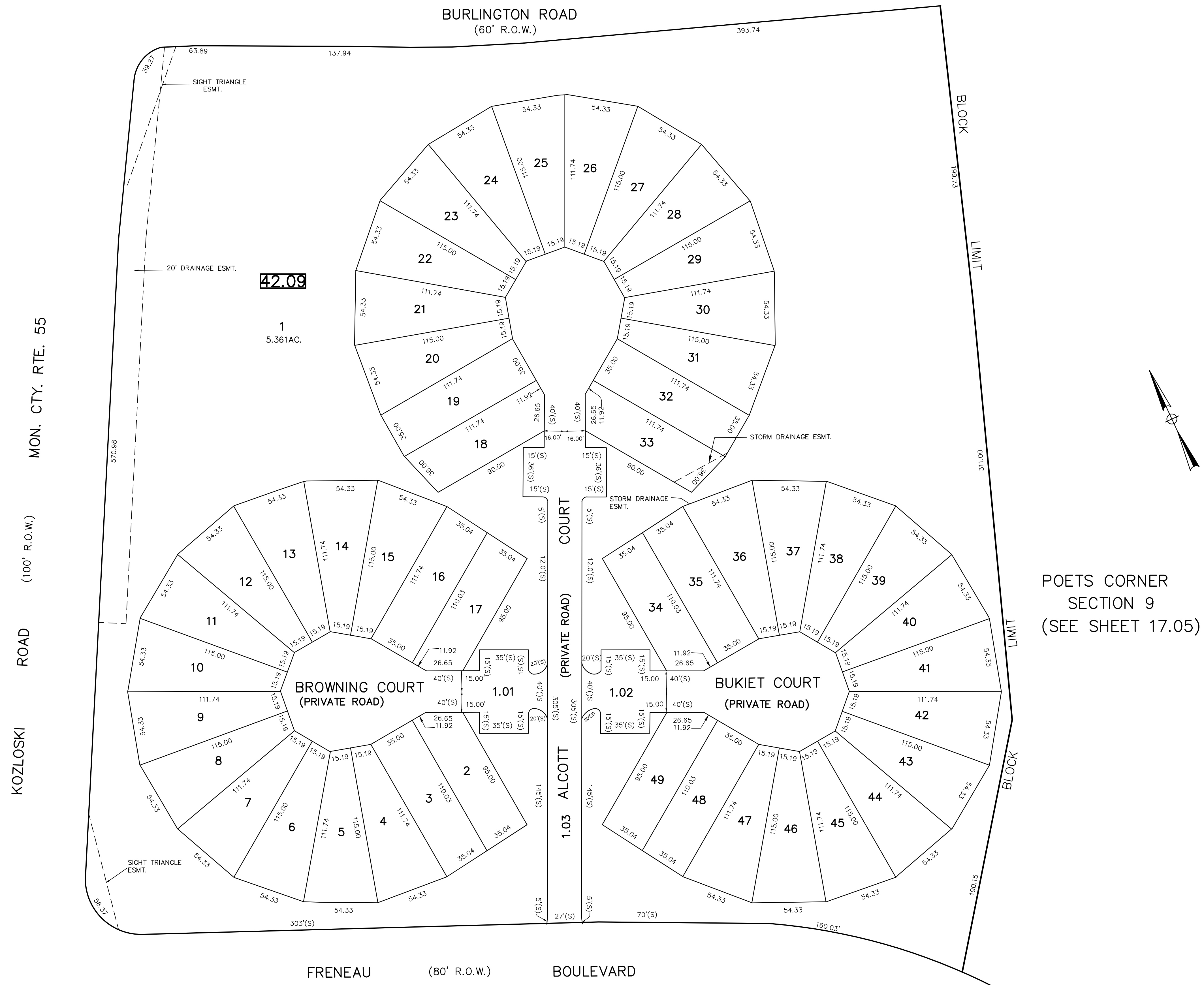


REVISIONS		
DATE	NAME	LIC. NO.



POETS CORNER  
SECTION 9  
(SEE SHEET 17.05)

**42.09**

1  
5.361AC.



**TAX MAP**  
TOWNSHIP OF FREEHOLD  
MONMOUTH COUNTY, NEW JERSEY  
SCALE: 1" = 40' JANUARY, 2008  
**JOSEPH M. MAVURO, P.E., P.L.S.**  
1 MUNICIPAL PLAZA  
FREEHOLD, NEW JERSEY 07728