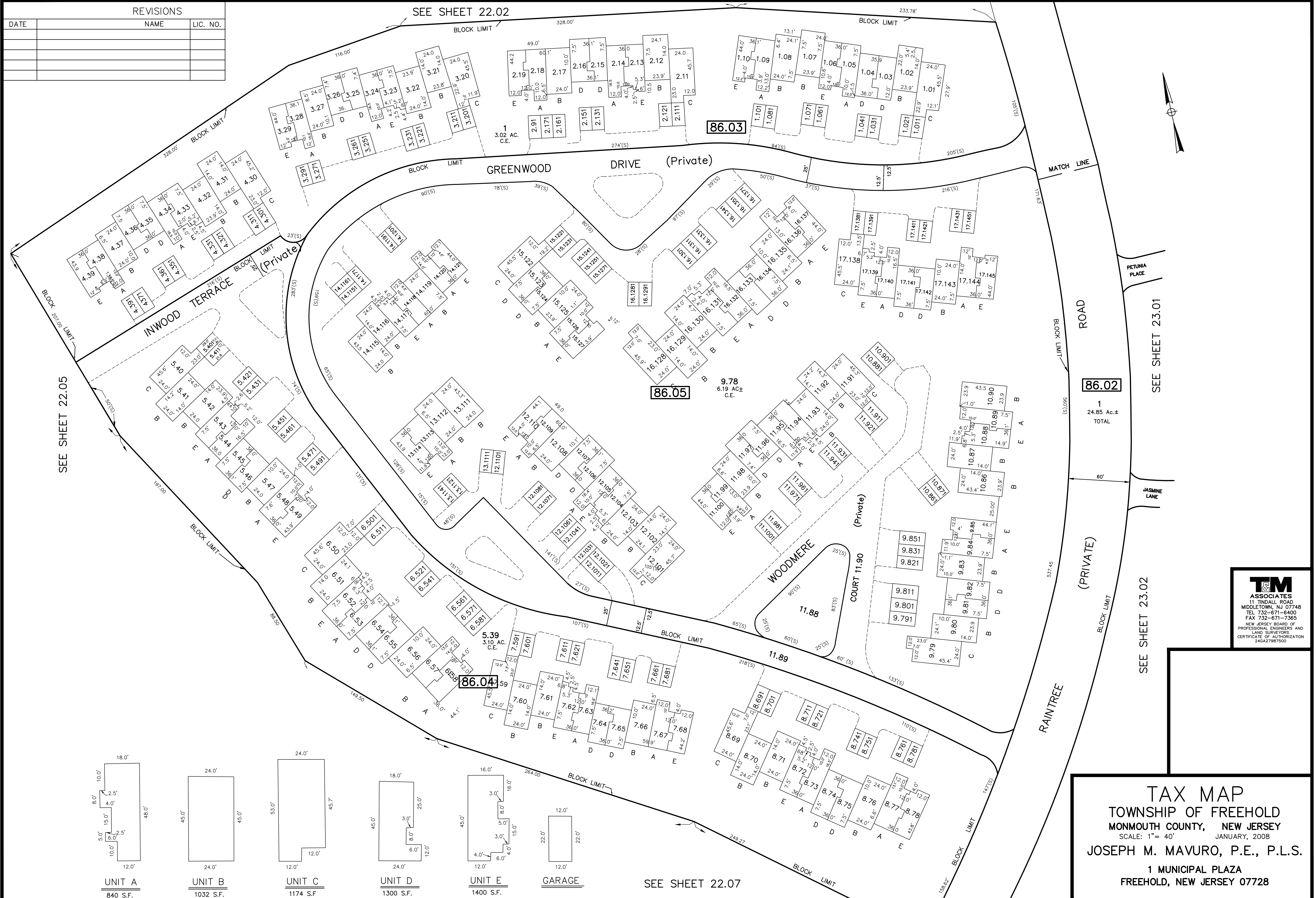


REVISIONS		
DATE	NAME	LIC. NO.



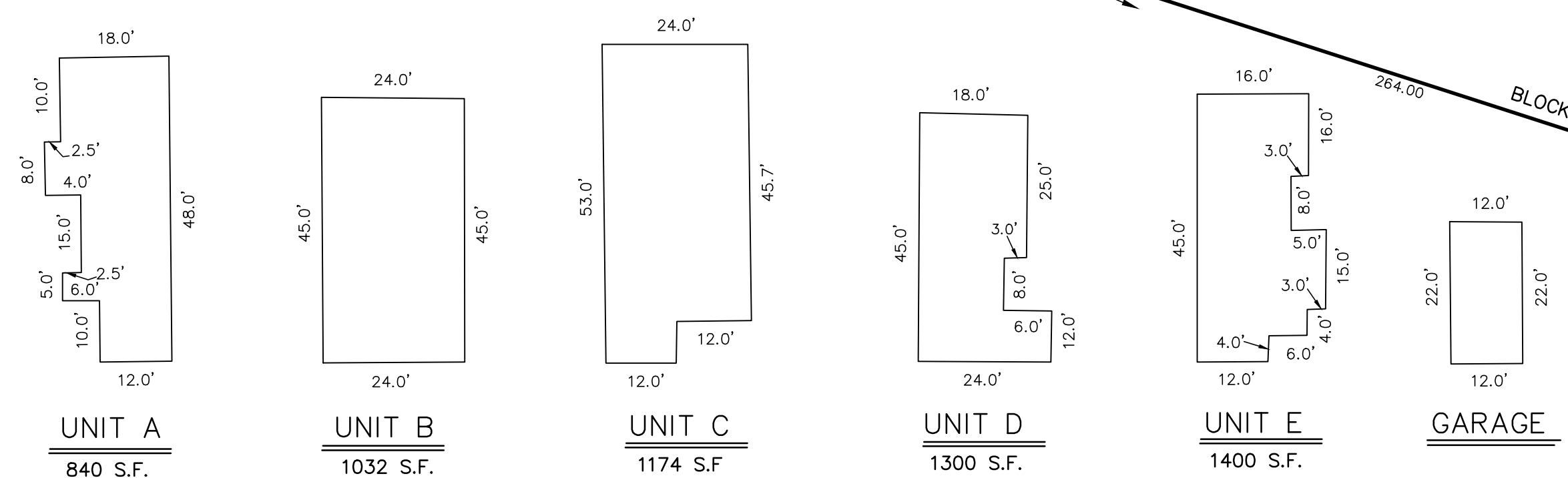
SEE SHEET 22.05

SEE SHEET 22.02

SEE SHEET 23.01

SEE SHEET 23.02

SEE SHEET 22.07



TAX MAP
 TOWNSHIP OF FREEHOLD
 MONMOUTH COUNTY, NEW JERSEY
 SCALE: 1" = 40' JANUARY, 2008
 JOSEPH M. MAVURO, P.E., P.L.S.
 1 MUNICIPAL PLAZA
 FREEHOLD, NEW JERSEY 07728

TM ASSOCIATES
 11 TINDALL ROAD
 MIDDLETOWN, NJ 07748
 TEL 732-671-6400
 FAX 732-671-7365
 NEW JERSEY BOARD OF PROFESSIONAL ENGINEERS AND LAND SURVEYORS
 CERTIFICATE OF AUTHORIZATION 240A27887600

THIS MAP HAS BEEN DRAWN USING COMPUTER AIDED DRAFTING/DESIGN (CAD/D) AND COORDINATE GEOMETRY.

THIS MAP IS A COPY OF THE ORIGINAL MAP PREPARED BY WILLIAM HELD, P.E. & P.L.S. DATED MARCH 1962. THE ORIGINAL MAP IS ON FILE IN THE ENGINEER'S OFFICE.