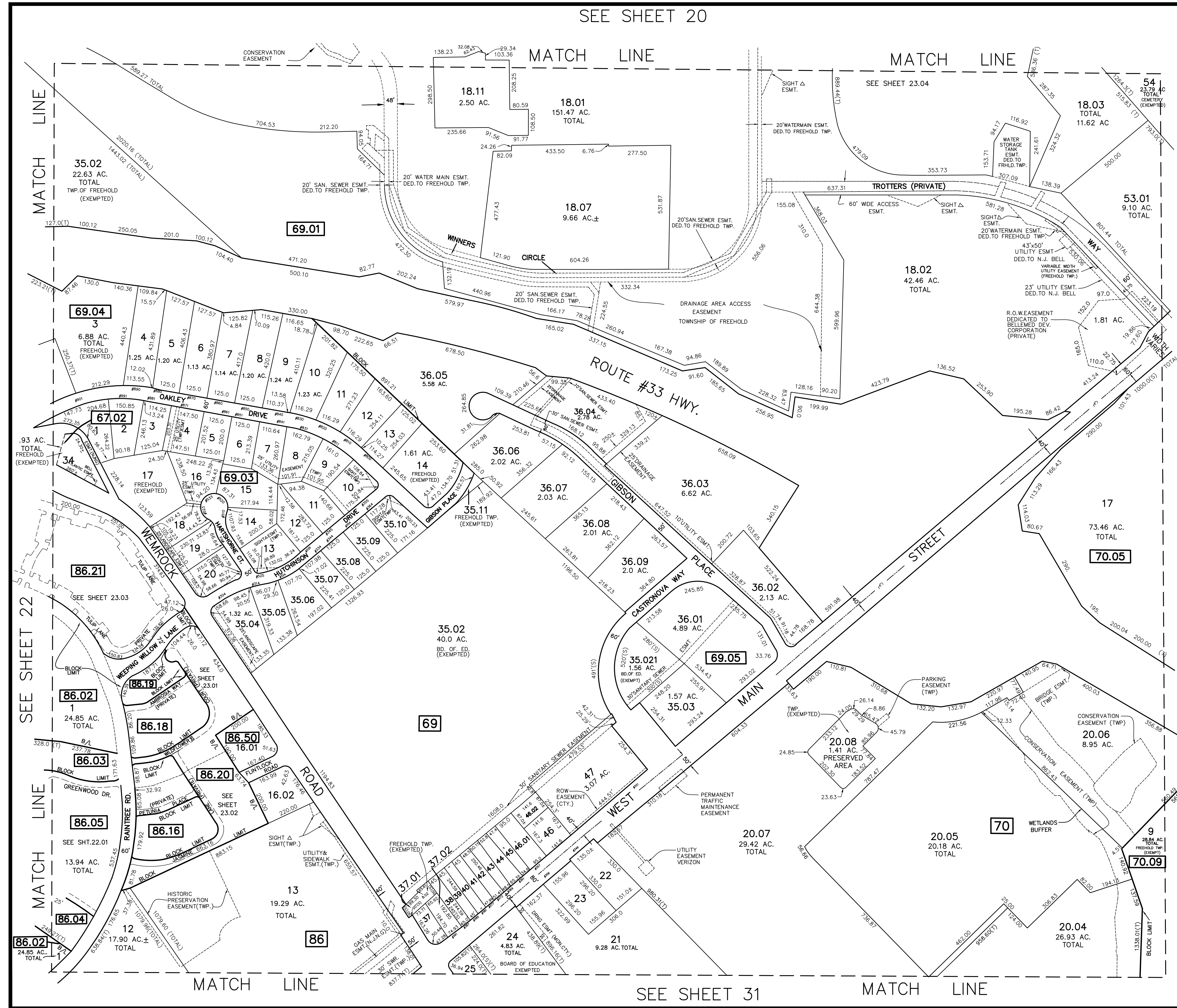


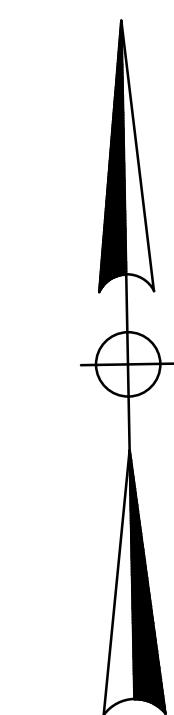
SEE SHEET 20

REVISIONS

DATE	NAME	LIC. NO.
3/16/10	JOSEPH M. MAVURO	24GB02424600
6/8/10	JOSEPH M. MAVURO	24GB02424600
9/28/10	JOSEPH M. MAVURO	24GB02424600
10/19/12	JOSEPH M. MAVURO	24GB02424600
10/19/12	JOSEPH M. MAVURO	24GB02424600
11/4/16	TIMOTHY P. WHITE	24GB04257000



SEE SHEET 24



**TM ASSOCIATES**  
 11 TINDALL ROAD  
 MIDDLETOWN, NJ 07748  
 TEL 732-671-6400  
 FAX 732-671-7365  
 NEW JERSEY BOARD OF PROFESSIONAL ENGINEERS AND LAND SURVEYORS  
 CERTIFICATE OF AUTHORIZATION 24GA27987500

**TAX MAP**  
 TOWNSHIP OF FREEHOLD  
 MONMOUTH COUNTY, NEW JERSEY  
 SCALE: 1" = 200' JANUARY, 2008  
**JOSEPH M. MAVURO, P.E., P.L.S.**  
 1 MUNICIPAL PLAZA  
 FREEHOLD, NEW JERSEY 07728

THIS MAP HAS BEEN DRAWN USING COMPUTER AIDED DRAFTING/DESIGN (CAD/D) AND COORDINATE GEOMETRY.