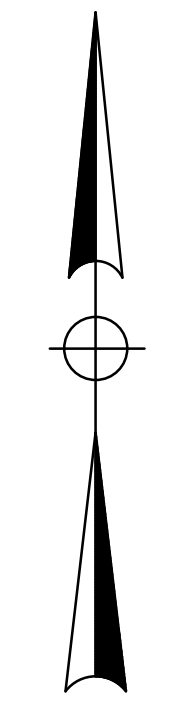
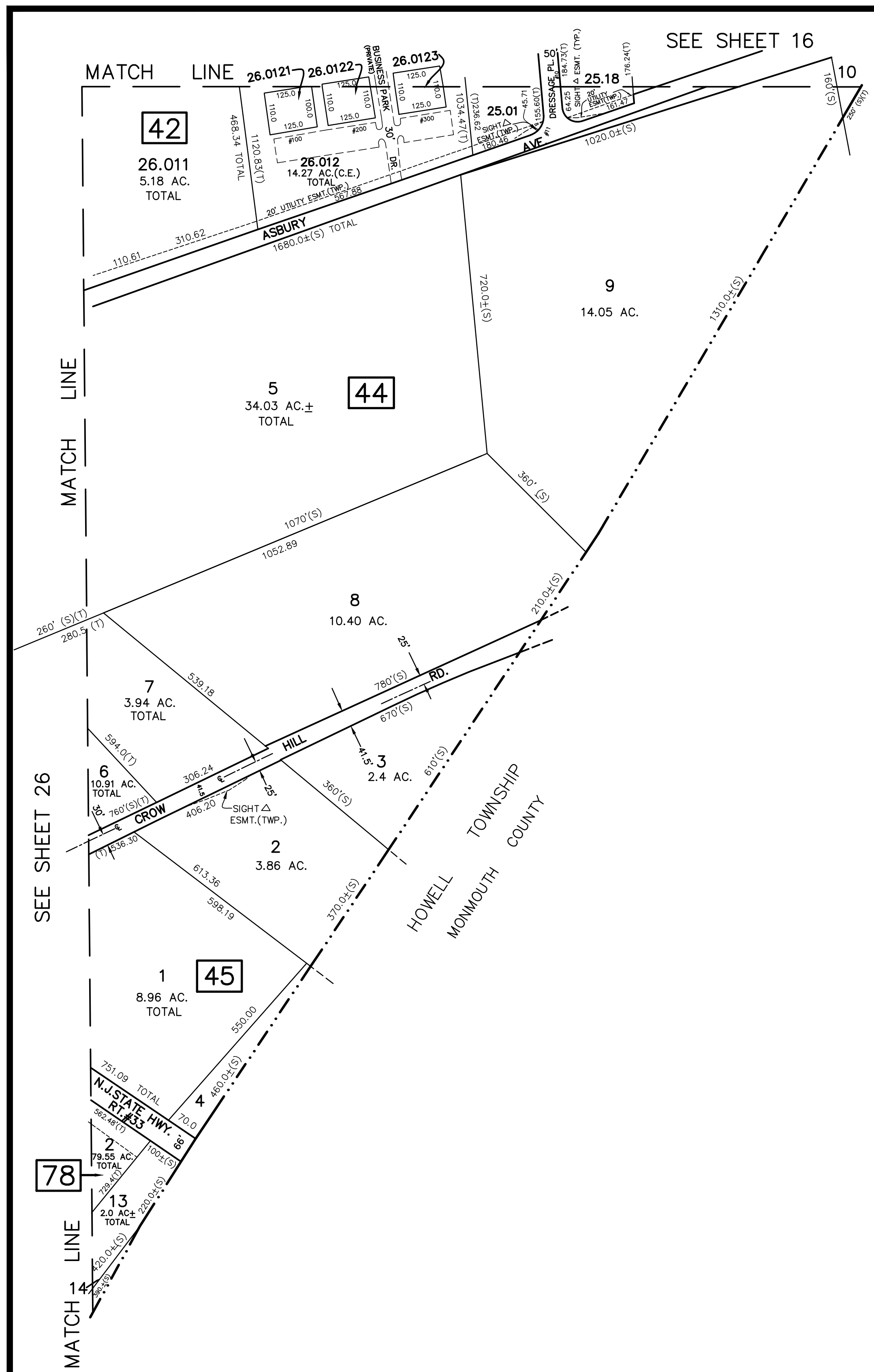


| REVISIONS |                  |              |
|-----------|------------------|--------------|
| DATE      | NAME             | LIC. NO.     |
| 4/23/10   | JOSEPH M. MAVURO | 24GB02424600 |
| 11/21/13  | JOSEPH M. MAVURO | 24GB02424600 |
|           |                  |              |
|           |                  |              |



**T&M**  
**ASSOCIATES**  
 11 TINDALL ROAD  
 MIDDLETOWN, NJ 07748  
 TEL 732-671-6400  
 FAX 732-671-7365  
 NEW JERSEY BOARD OF  
 PROFESSIONAL ENGINEERS AND  
 LAND SURVEYORS  
 CERTIFICATE OF AUTHORIZATION  
 24GA27987500

**TAX MAP**  
**TOWNSHIP OF FREEHOLD**  
**MONMOUTH COUNTY, NEW JERSEY**  
 SCALE: 1"= 200' JANUARY, 2008  
**JOSEPH M. MAVURO, P.E., P.L.S.**  
 1 MUNICIPAL PLAZA  
 FREEHOLD, NEW JERSEY 07728

THIS MAP HAS BEEN DRAWN USING COMPUTER AIDED DRAFTING/DESIGN (CAD/D) AND COORDINATE GEOMETRY.

THIS MAP IS A COPY OF THE ORIGINAL MAP PREPARED BY WILLIAM HELD, P.E. & P.L.S. DATED MARCH 1962. THE ORIGINAL MAP IS ON FILE IN THE ENGINEER'S OFFICE.