

REVISIONS		
DATE	NAME	LIC. NO.

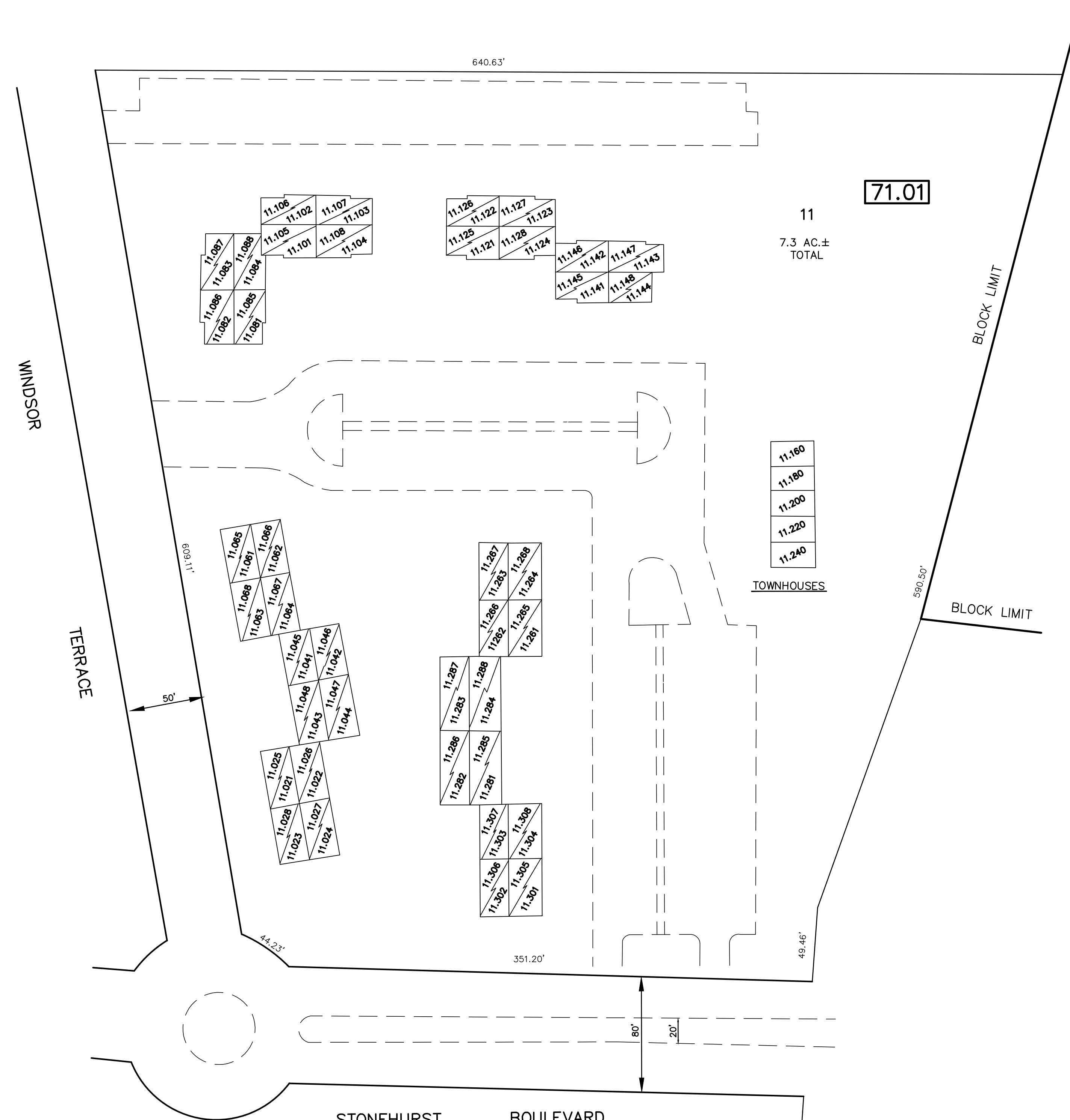
SEE SHEET 30

THIN DIAGONAL LINE REPRESENTS TWO LEVEL CONDOMINIUMS
 LOT NUMBER ENDING WITH 5-8 REPRESENTS SECOND FLOOR UNITS
 LOT NUMBER ENDING WITH 1-4 REPRESENTS FIRST FLOOR UNITS

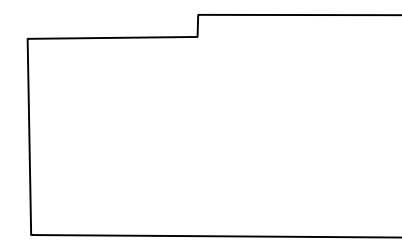


SEE SHEET 30.03

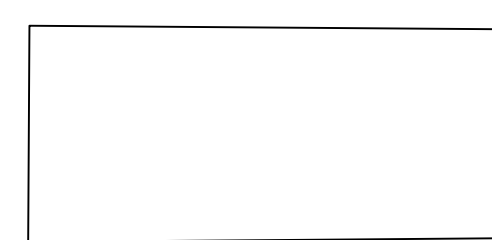
SEE SHEET 30



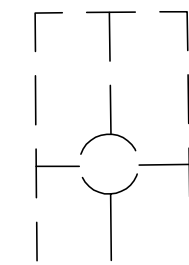
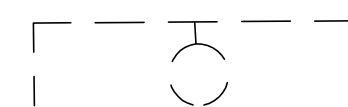
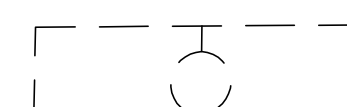
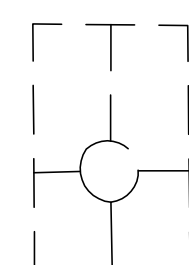
TYPICAL UNITS



UNIT A
704 S.F.



UNIT K
1080 S.F.



SEE SHEET 30.01

TM
ASSOCIATES
 11 TINDALL ROAD
 MIDDLETOWN, NJ 07748
 TEL 732-671-6400
 FAX 732-671-7365
 NEW JERSEY BOARD OF
 PROFESSIONAL ENGINEERS AND
 LAND SURVEYORS
 CERTIFICATE OF AUTHORIZATION
 24G27987500

THIS MAP HAS BEEN DRAWN USING COMPUTER AIDED
 DRAFTING/DESIGN (CAD/D) AND COORDINATE GEOMETRY.

TAX MAP
TOWNSHIP OF FREEHOLD
MONMOUTH COUNTY, NEW JERSEY
 SCALE: 1"= 50' JANUARY, 2008
JOSEPH M. MAVURO, P.E., P.L.S.
 1 MUNICIPAL PLAZA
 FREEHOLD, NEW JERSEY 07728

THIS MAP IS A COPY OF THE ORIGINAL MAP
 PREPARED BY WILLIAM HELD, P.E. & P.L.S.
 DATED MARCH 1962. THE ORIGINAL MAP IS
 ON FILE IN THE ENGINEER'S OFFICE.