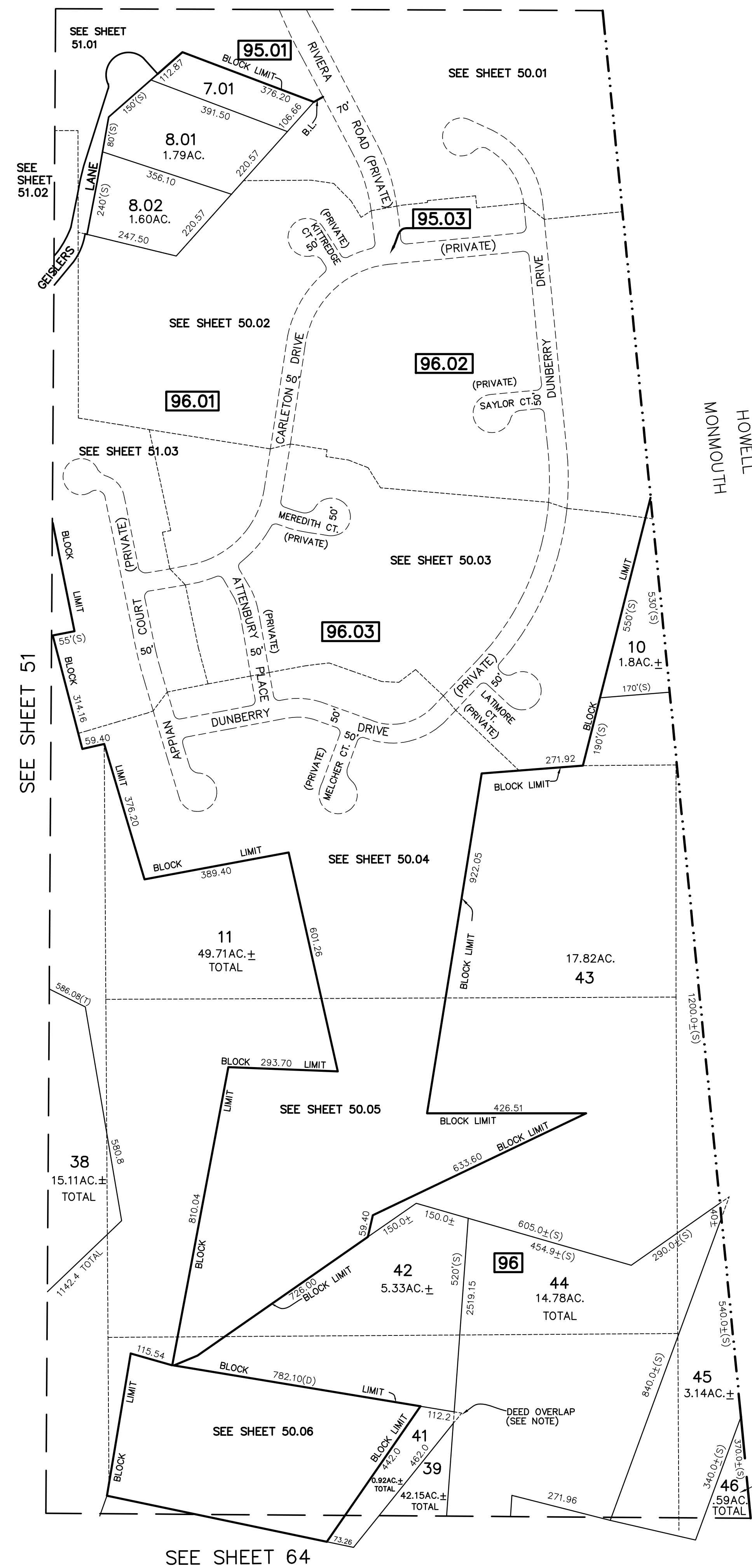


SEE SHEET 49

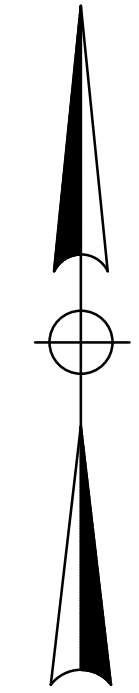
REVISIONS		
DATE	NAME	LIC. NO.



HOWELL
MONMOUTH
TOWNSHIP
COUNTY

NOTE:
 RE: LOTS 41 & 44
 THE OVERLAPPING LINES AND DIMENSIONS SHOWN
 ARE PLOTTED IN ASSORDANCE WITH THE METES &
 BOUNDS DESCRIPTIONS APPEARING IN THE LAST DEED
 OF RECORD FOR EACH PARCEL, AND DO NOT PURPORT
 TO REPRESENT TITLE OR OWNERSHIP STATUS IN ANY
 MANNER. THESE SITUATIONS ARE SUBJECT TO SOLUTION
 BY THE PROPERTY OWNERS INVOLVED.

FARMLAND PRESERVATION EASEMENT (MON.CTY.)



TM
 ASSOCIATES
 11 TINDALL ROAD
 MIDDLETOWN, NJ 07748
 TEL 732-671-6400
 FAX 732-671-7365
 NEW JERSEY BOARD OF
 PROFESSIONAL ENGINEERS AND
 LAND SURVEYORS
 CERTIFICATE OF AUTHORIZATION
 24GA27987500

TAX MAP
 TOWNSHIP OF FREEHOLD
 MONMOUTH COUNTY, NEW JERSEY
 SCALE: 1"= 200' JANUARY, 2008
JOSEPH M. MAVURO, P.E., P.L.S.
 1 MUNICIPAL PLAZA
 FREEHOLD, NEW JERSEY 07728

THIS MAP HAS BEEN DRAWN USING COMPUTER AIDED DRAFTING/DESIGN (CAD/D) AND COORDINATE GEOMETRY.

THIS MAP IS A COPY OF THE ORIGINAL MAP PREPARED BY WILLIAM HELD, P.E. & P.L.S. DATED MARCH 1962. THE ORIGINAL MAP IS ON FILE IN THE ENGINEER'S OFFICE.